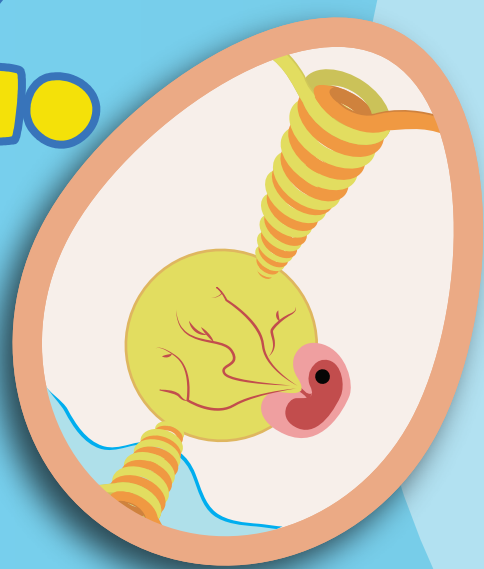




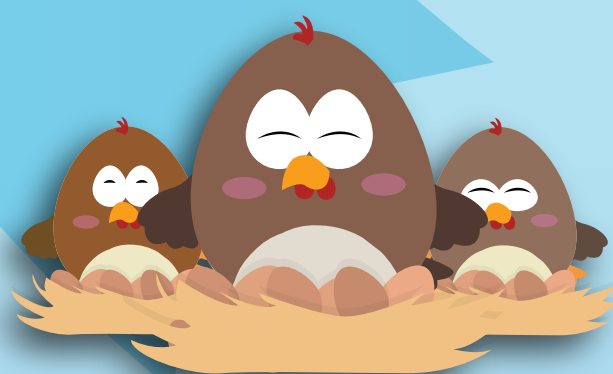
The life cycle of a chicken

2.



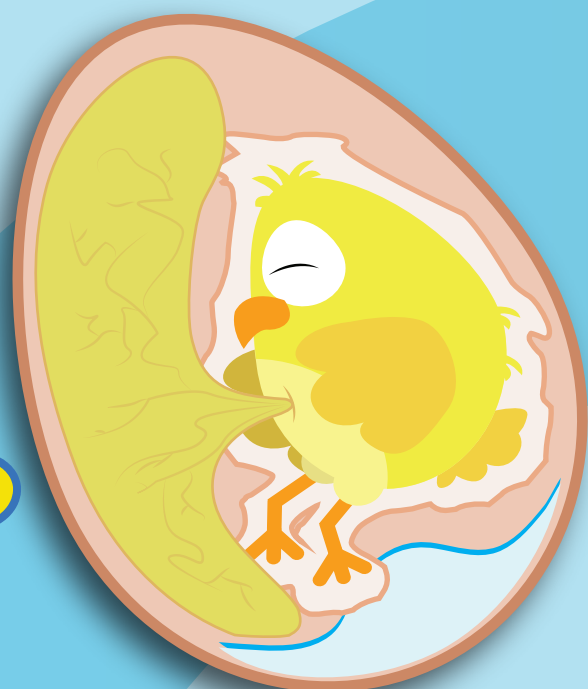
The embryo begins to grow in the egg

1.



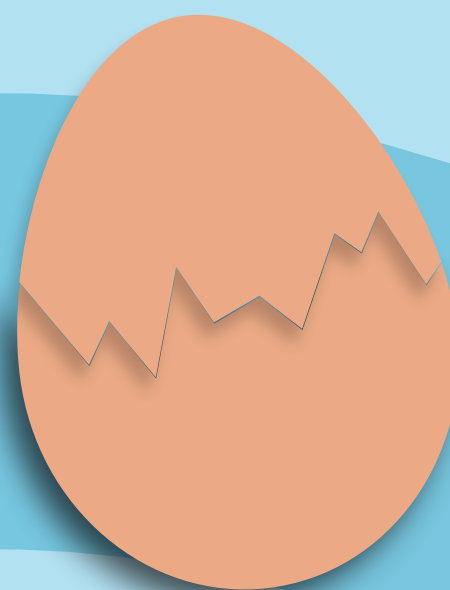
A hen lays a fertilised egg

3.



The embryo develops over 21 days before it is ready to hatch

4.



At the end of the chick's beak is a bump called the 'egg tooth.' The chick uses this tooth to make a tiny hole then break the shell.

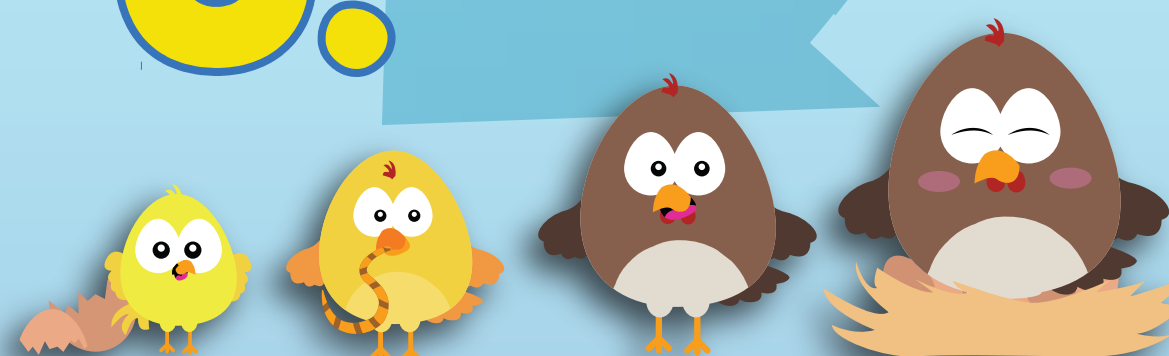
5.



The chick hatches out of the egg

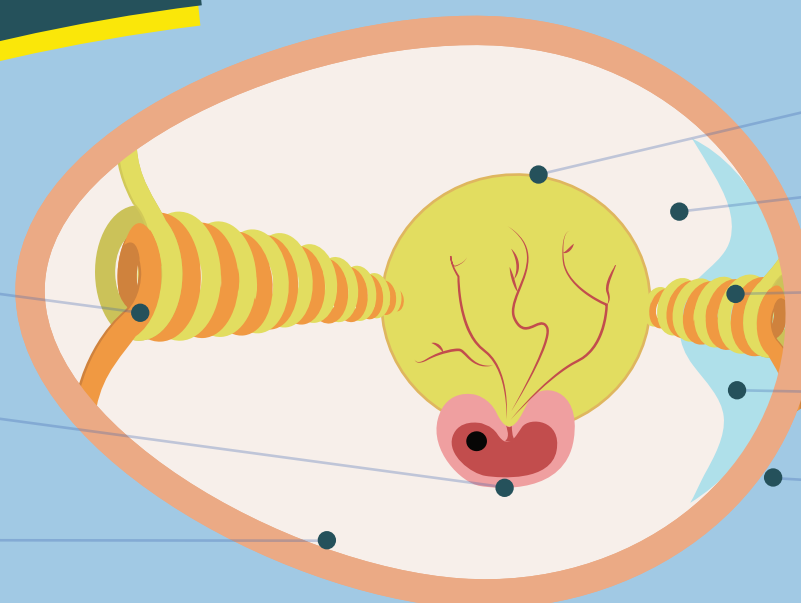
6.

Once chickens are a year old, females are called hens and males are called roosters



Inside an egg

CHALAZA •
BLASTODISC •
SHELL MEMBRANE •



• YOLK
• ALBUMEN
• CHALAZA
• AIR CHAMBER
• SHELL

Learn more

www.allabouteggs.com.au

© 2018 Australian Eggs Limited

